

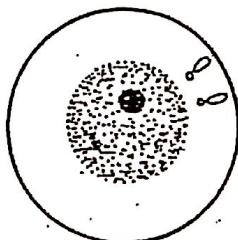
Mitosis Quiz

Name _____

Date _____

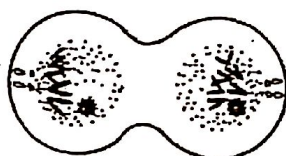
Match the phase name from the left hand column to the correct diagram in the center.
Match the phase description from the right hand column to the correct diagram in the center.

1. Prophase



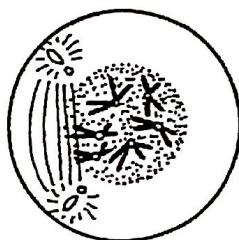
1. A new nuclear envelope forms at each pole. The spindle dissolves, and the chromosomes uncoil. Cytokinesis begins.

2. Anaphase



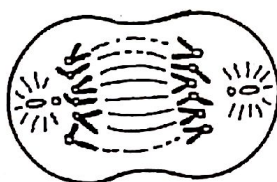
2. The condensed chromosomes line up along the equator. Spindle fibers link the chromatids of each chromosome to opposite poles.

3. Interphase



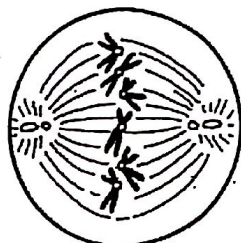
3. The cell is not dividing. It is growing and preparing to divide.

4. Metaphase



4. As the spindle fibers shorten, the chromatids are pulled toward opposite poles of the cell.

5. Telophase



5. Chromosomes begin to condense. The nuclear membrane dissolves. The centrosomes move to opposite poles, and the spindle forms.

Write the phases of mitosis in order.
